

European Solar and Energy Storage Solutions

Wind Wall Wind Turbine



Overview

The Wind Turbine Wall is a system of small wind turbines that can be mounted on the exterior walls of buildings.

Wind Wall Wind Turbine

GRADE A BATTERY

LiFePO4 battery will not burn when overcharged, over discharged, overcurrent or short circuited and can withstand high temperatures without decomposition.



The Genius "Wind Turbine Wall" Could Power Your ...

Doucet is thinking big with this project. His vision is to use larger-scale wind turbine walls on the side of buildings and along highways. It is easy to build a wind turbine wall on a larger scale. The challenge is using ...

Airiva: Modular Rotary Turbine Walls Revolutionize Urban Wind Energy

The initial idea in 2021 envisioned a wall of 25 vertical-axis turbines with a total peak power output of 10 kilowatts. While the intermittent nature of wind means that actual ...



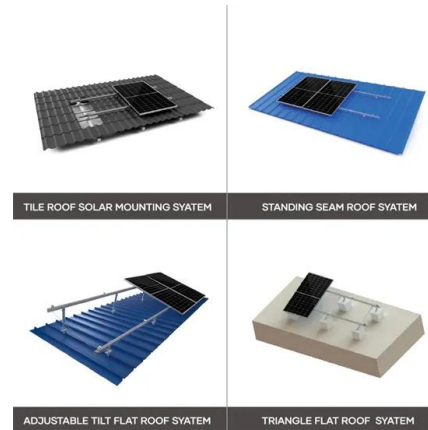
'Wind Wall' Could Generate Enough Electricity to Run 4 Homes ...

The prototype of a wind turbine on a flat wall structure is ready and it measures about 8 feet tall and 25 feet wide. Rectangular in shape, the wind turbine wall features 25 off ...

Mesmerizing vertical turbine wall to enter customer ...

That time is here with the launch of Airiva, a

modular rotary wind turbine wall destined for installation on city buildings and infrastructure. The idea in 2021 was to build a mesmerizing



Revolutionizing Eco-Friendly Architecture: The Wind ...

In tandem with the rise of rooftop solar panels, envisioning various facets of a home generating clean electricity is an exciting prospect. Recent breakthroughs in cost and technology are facilitating the emergence of ...

A New Wind Power Wall Could Produce Over 10,000 ...

That's why American designer and entrepreneur Joe Doucet has created an inconspicuous wall of wind turbines that can hide in plain sight and produce over 10,000 kilowatt-hours per year, enough



Captivating modular wind turbine wall set for ...

This project, now known as Airiva, is a modular rotary wind turbine wall designed for installation on urban buildings and infrastructure. The concept, which aims to generate renewable energy through an array of ...

Emergency Wind Generators - Net Zero Solutions

The Advanced WindWall® (AWW) our mobile unit is an array of 98 MicroCubes® that sits on a worm geared motor base to keep the turbines turned into the wind at all times. Contact Us New York Business Theme



Contact Us

For catalog requests, pricing, or partnerships, please visit:
<https://ssab-proiect.eu>