

European Solar and Energy Storage Solutions

Wind power generation technology



Overview

Wind power generation refers to the technology of converting the kinetic energy of the wind into electric power through a wind turbine.

Wind power generation refers to the technology of converting the kinetic energy of the wind into electric power through a wind turbine.

Wind turns the propeller-like blades of a turbine around a rotor, which spins a generator, which creates electricity. To see how a wind turbine works, click on the image for a demonstration.

They generate power using a giant ring of permanent magnets that spin with the rotor to produce electric current as they pass through stationary copper coils.

Wind turbines use blades to collect the wind's kinetic energy. Wind flows over the blades creating lift (similar to the effect on airplane wings), which causes the blades to turn.

Wind energy is a form of renewable energy, typically powered by the movement of wind across enormous fan-shaped structures called wind turbines.

Wind power generation technology

Overview of advanced control technology for wind power generation



At present, haze has been raging over main cities in China. As a clean, contaminant free and regenerative energy, wind power has received wide acknowledgement and rapid development.

...

Wind power , Description, Renewable Energy, Uses, ...

4 ??? Areas are grouped into wind power classes that range from 1 to 7. A wind power class of 3 or above (equivalent to a wind power density of 150-200 watts per square meter, or a ...



Sample Order
UL/KC/CB/UN38.3/UL



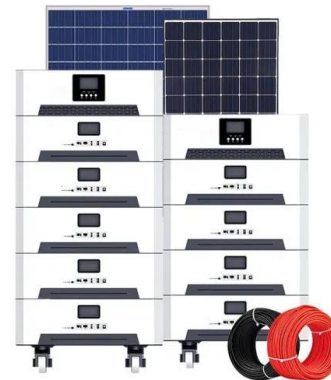
The Evolution of Wind Turbine Technology: Past, ...

Wind energy has long been harnessed as a source of power, dating back centuries to the use of windmills for milling grain and pumping water. In recent decades, wind turbine technology has undergone a remarkable ...

Technology Advancements Could Unlock 80% More ...

Innovations in wind technology--such as on-site

manufacturing, taller towers, longer blades, and wake steering--could allow wind power plants (yellow circles on maps) to be deployed in new areas of the United States ...



Wind turbine , Renewable Energy, Efficiency & Design

wind turbine, apparatus used to convert the kinetic energy of wind into electricity. Wind turbines come in several sizes, with small-scale models used for providing electricity to rural homes or cabins and community -scale ...

Wind power PRESENTATION , PPT , Free Download

With the right policy and market incentives, wind power technology can provide more than 6% of the nation's electricity by 2020, which is roughly equal to an installed capacity base of 100,000 MW. With a very ...



Contact Us

For catalog requests, pricing, or partnerships, please visit:
<https://ssab-proiect.eu>